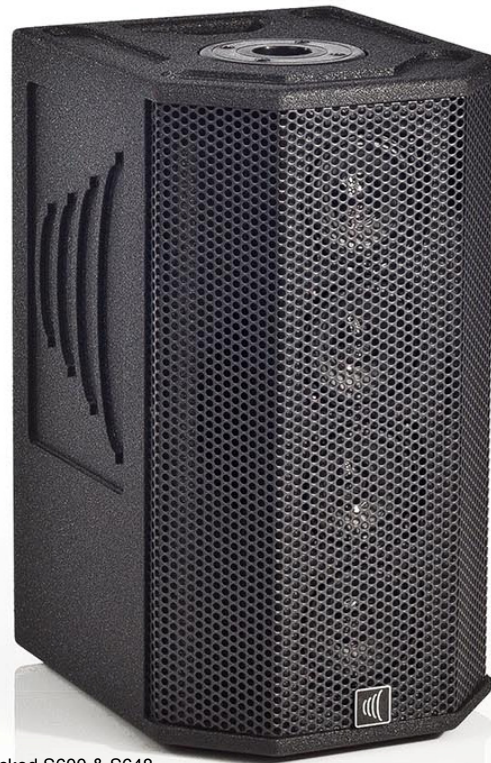


Features

- ♦ Ultra Portable, Expandable System
- ♦ **CDD™** (Constant Delivery Dispersion) speaker array technology for excellent intelligibility at a distance
- ♦ **VCE™** (Vertical Coverage Expansion) for increased coverage angle from a single array speaker
- ♦ S600B Battery Power model
- ♦ Stereo Power Amp with external Speaker Jacks
- ♦ **Bluetooth®** Connectivity for audio playback
- ♦ Plug-in Wireless Mic/Instrument Receiver option
- ♦ XLR Microphone inputs
- ♦ High Impedance instrument inputs
- ♦ Stereo Inputs, (dual 1/4", stereo 1/8")
- ♦ DSP effects with Echo, Reverb and Chorus
- ♦ USB Charge Port
- ♦ Phantom Power for condenser microphones
- ♦ XLR Line Out/Subwoofer connection
- ♦ Headphone jack
- ♦ Four 3.5-inch Array Drivers
- ♦ 8-inch Heavy Duty neodymium woofer
- ♦ Black Duratec™ weather and impact resistant finish
- ♦ Top and bottom pole mounts



SHOWN WITH UX600R WIRELESS RECEIVER OPTION

Applications

- ♦ Small venues, theaters, clubs, and ballrooms
- ♦ House of worship, classrooms, and halls
- ♦ Outdoor events
- ♦ Mobile or on-location events requiring battery power

Description

The **S600/S600B StageMate™** is designed as a complete grab-and-go PA system using advanced speaker array technology. The smooth, linear sound carries far distances without the need for excessive volume close to the speaker. The coverage is up to twice that of conventional cabinets, and with less feedback.

The system is easily expanded to stereo operation with the matching S648 speakers. For more demanding live and dance music, connect the Line Out XLR to powered subwoofers or connect directly to the house PA system.

The S600B has the option to run on it's internal rechargeable 12V battery allowing it to be used in remote locations as well as mobile applications.

The 6-channel mixer is capable of receiving up to 11 different sources simultaneously. A variety of inputs includes Bluetooth® connectivity for audio playback, four XLR microphone inputs, two high-impedance instrument inputs, stereo line input, 1/8" input for portable devices, and the optional UX600R UHF wireless mic/instrument receiver which plugs directly into the accessory bay. Built in Echo, Reverb, and Chorus with Reverb effects add extra dimension to live performances.

Stacked S600 & S648 increases line array distance coverage



Optional UX600 wireless microphone, beltpack or both.



VCE™ technology for increased vertical coverage



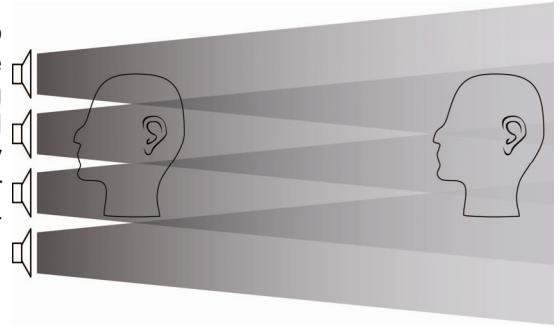
Specifications: S600/S600B

- System Type:** Powered Mixer Column PA speaker
- Drivers:** (4x) 3.5-inch driver array, 8" woofer
- Coverage Pattern:** Horizontal 110; Vertical 40 degrees
- Crossover Freq:** 400 Hz
- Total Power:** 400W (200W battery mode S600B)
- AC mode:** 150W/ch. @ 8ohms
200W/ch. @ 4ohms
- S600B Battery Mode:** 75W/ch. @ 8ohms
100W/ch. @ 4ohms
- Enclosure:** Russian Baltic Birch
- Suspension/Mounting:** Two 1-3/8 pole mount cups, top/bottom
- Transport:** Built-in handle
- Finish:** Black Duratec™ coating
- Grill:** Black powder coated steel
- Dimensions (H x W x D):** 17.25 in. x 9.75 in. x 11.50 in.
438 mm x 248 mm x 292 mm
- Net Wt:** **S600:** 20.5 lb (9.3 kg)
S600B: 25.5 lb (11.6 kg) Battery model
- Accessories:** **S648** extension speaker, 18lb (8.2 kgs)
UX600R plug-in wireless receiver:
UX600M microphone or **UX600B** beltpack
B600 replacement 12V battery
C25 12V automotive charging adapter
CB601 rolling padded carry bag
CV600 vinyl cover
SS15 Speaker stand set

HOW DOES CDD™ (Constant Delivery Dispersion) speaker array technology WORK?



When the listener is close, sound is heard from only one or two speakers lowering the volume heard. As the distance from the speakers increases, the sound is heard from all speakers working together. The arrangement of the speakers directs the sound waves to travel in a tighter pattern, which increases their output by a factor of two times compared to a conventional single speaker source. For increased distance coverage, an S648 extension cabinet can be stacked on top of the S600.



Control Panel Features

11 Simultaneous Sources in 6 Channels

The Carvin **S600/S600B StageMate™** features a 6 channel mixer with a variety of inputs, and is capable of receiving up to 11 different sources simultaneously. Channels 1 through 4 feature XLR inputs, Hi, Mid and Low EQ controls, Effects level, and a +20dB switch to increase the level of soft voices or low output microphones. The Phantom switch enables condenser microphones to be powered directly from the XLR on channels 3 and 4. Channels 1 and 2 also feature 1/4" inputs with a Hi-Z impedance switch for higher fidelity from instrument pickups. Channels 5 and 6 are stereo channels featuring Hi and Low EQ controls, with dual 1/4" inputs or a single stereo 1/8" input for portable devices. **Bluetooth®** connectivity for audio playback through channel 6 is enabled by a switch, indicated by a blue LED which blinks off/on until the connection is complete. The USB Charge port allows you to keep your portable devices charged for playback.

Add a UX600 wireless Microphone or Belt Pack System

The optional **UX600R** wireless microphone or belt pack instrument system receiver plugs directly into the accessory bay and becomes part of the system. To complete the UX600 wireless system use the **UX600M** wireless microphone or **UX600B** wireless belt pack.

Echo, Reverb, and Chorus Effects

Add extra dimension to live performances using the internal DSP effects of echo, reverb, and chorus. Channels 1-4 can send to the internal effect processor. The effect type and variations are selected and adjusted with one simple knob for echo, reverb, or chorus with reverb.

Go Mono or Make it a Stereo System

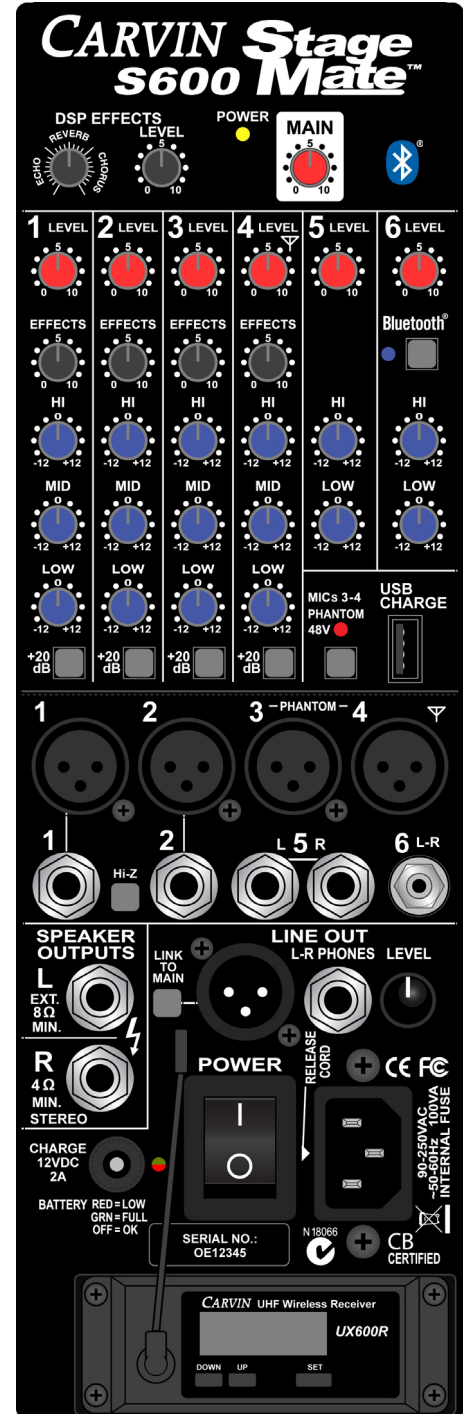
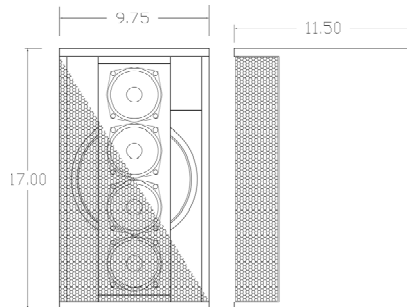
The S600 is a true stereo mixer and power amp system. As a stand alone mono system it sums the left and right master signals sending it to the internal speakers. The headphone output is stereo at all times. For more coverage, add a matching S648 passive column extension speaker. Mono operation continues if *only* using the the L(EXT.) speaker jack. Plugging into the R(STEREO) jack enables the stereo power amp, delivering Right side signals to the external speaker and Left side signals to the internal speakers and the L(ext.) jack.

Create a four-cabinet stereo system driven by one S600, by adding three S648 extension speakers. Plug one S648 into the L(EXT.) speaker jack and chain two of the S648's plugged into the R(STEREO) jack. Stereo or mono, stacking two speakers increases the column array effect, which improves distance coverage and low end response.

Go any where with the S600B Battery model

The **S600B** has all the features of the S600 with an internal battery allowing operation without being connected to a wall socket. With the S600B you can amplify your event anywhere: beaches, parks, and quick events without the need to find a power source. It will change any time you are using it with an AC wall socket or just have it plugged in and turned on. Also available is a 12V charge jack which can be connected with an adapter to a typical 12V automotive output.

Dimensions:



SHOWN WITH OPTIONAL UX600R WIRELESS RECEIVER